

Echo Echo Studios VENUE HIRE



Echo Echo Studios – A unique conference and event venue for hire in a beautiful historic building in the heart of Derry-Londonderry city centre.



LOTTERY FUNDED

Echo Echo Dance Theatre Company
City Walls, Magazine St. Derry
Tel: +44(0)28 71308883
www.echoechodance.com
info@echoechodance.com



ABOUT US

Accessed directly from the city's historic Walls at Magazine Street, Echo Echo Studios host spectacular views of the surrounding areas. The venue is used for a wide range of activities, from dance and music performances to conferences, festivals and presentations, as well as being the home for Echo Echo Dance Theatre Company.

Our versatile Studio 1 offers tiered theatre seating for 68 people and has a capacity of 110. Meeting rooms are available for training, small boardroom style meetings and conferences. Our small, friendly team will work with you to accommodate your needs and make your hire a memorable one. With a great location in the heart of the city centre, competitive rates and a welcoming team, our fully accessible venue could be just what you need.

We've hosted events for: Arts Council of Northern Ireland, University of Ulster, CultureTech, TheatreNI, Celtronic, EUROCITIES, Derry City & Strabane District Council, Libraries NI, The Honourable The Irish Society, The National Trust and many more.



LOTTERY FUNDED



Echo Echo Dance Theatre Company

City Walls, Magazine St. Derry

Tel: +44(0)28 71308883

www.echoechodance.com

info@echoechodance.com



FACILITIES

State of the art sound and lighting systems - With in-house AV facilities, technician and fully equipped theatre lighting, our studios can be used to dramatic effect or to enhance your corporate branding.

Fibre optic broadband (wired and wireless) with free high-speed Wi-Fi access throughout the building ♦ LCD Projectors and screens ♦ Wireless microphones (handheld and lapel) ♦ CD & MP3 Connectivity ♦ LEDs, spotlights, general wash lights ♦ Lectern and tables ♦ Breakout rooms ♦ Shower and changing area ♦ Front of House and event support service

Additional services include: Catering ♦ Event animation ♦ Performance (dance/music) and artistic services ♦ Workshops ♦ Training days with Echo Echo Ensemble

To find out more about the services we offer just give us a call or email.



Reception Room



LOTTERY FUNDED



Echo Echo Dance Theatre Company

City Walls, Magazine St. Derry

Tel: +44(0)28 71308883

www.echoechodance.com

info@echoechodance.com

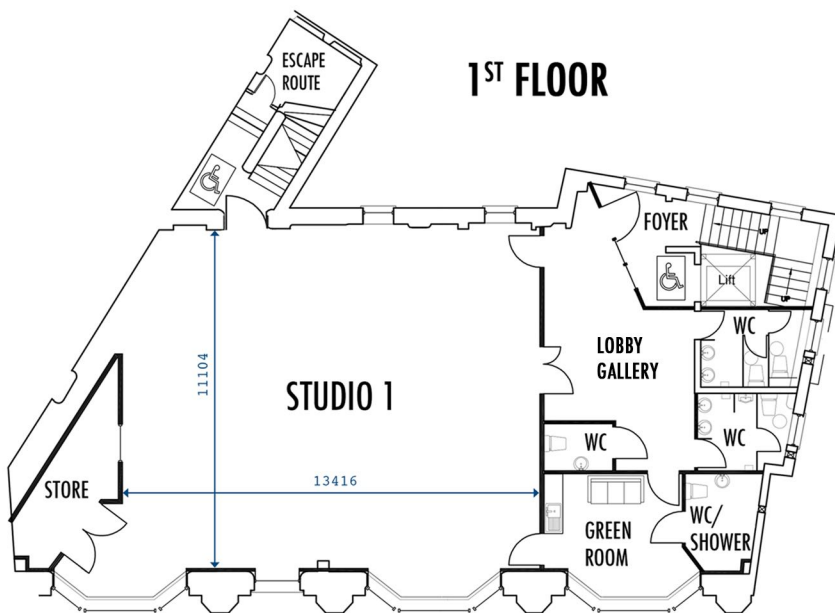


SPACES

Studio 1



1ST FLOOR



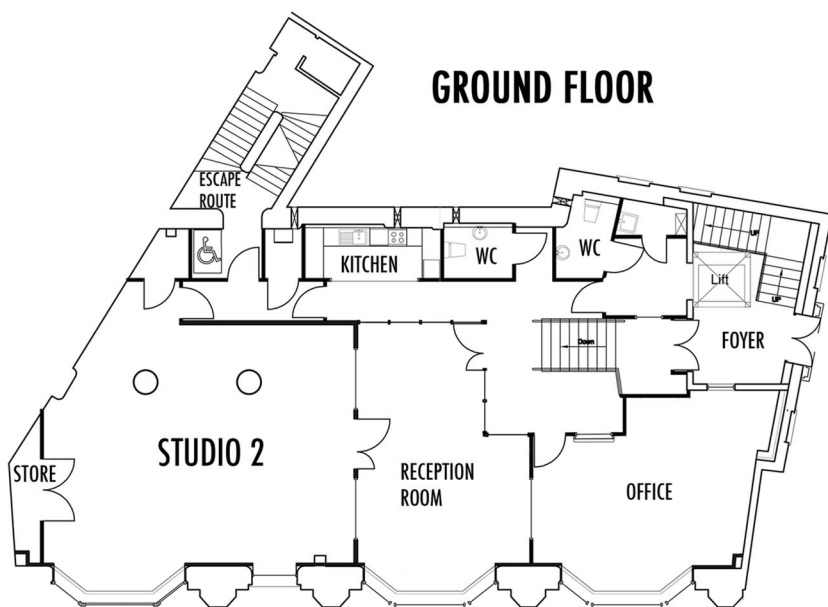
Studio 1

- ◆ Suitable for: conference, seminar, meeting, performance, wedding, art installation, workshop, rehearsal
- ◆ Versatile portable staging/seating
- ◆ Daylight or theatre lighting with blackout curtains
- ◆ Adjoining Green Room with shower and changing facilities
- ◆ Capacity - 110 (68 tiered seating)
- ◆ Floor space - 143m²

SPACES



Studio 2



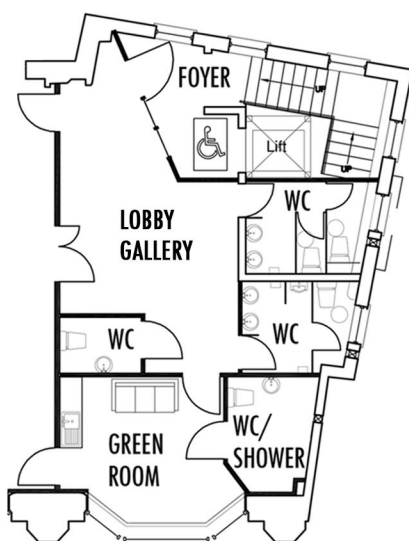
Studio 2

- ◆ Suitable for: dance rehearsal, meeting, performance, gallery space, workshop, exhibition
- ◆ Daylight or theatre lighting
- ◆ Adjoining reception area & kitchen facilities
- ◆ Capacity - 50
- ◆ Floor space - 76m²

SPACES



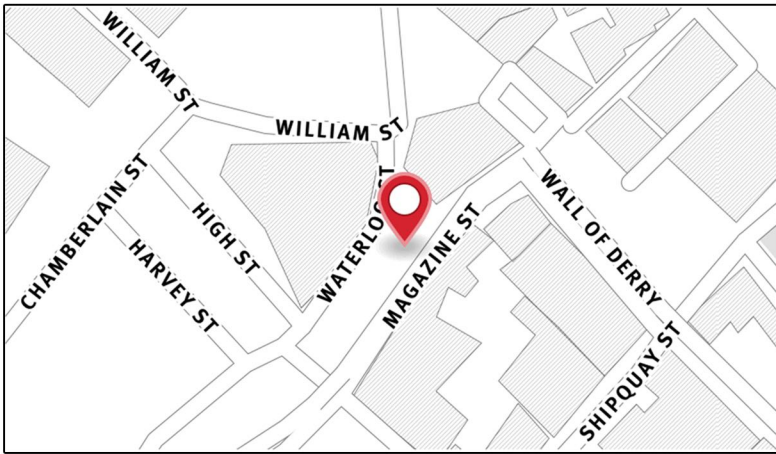
1ST FLOOR



Lobby Gallery

- ◆ Suitable for: art gallery, Studio 1 break-out area
- ◆ Gallery lighting
- ◆ Adjoining Green Room with shower and changing facilities
- ◆ Capacity - 30 (standing)
- ◆ Floor space - 32m²

LOCATION



Echo Echo Dance Theatre Company
Waterloo House,
Hangman's Bastion,
Magazine Street,
Derry - Londonderry
Northern Ireland BT48 6HH

Our front door is the rear entrance to Waterloo House at Hangman's Bastion on the City Walls and accessed directly from lower Magazine Street.

Parking

There is very limited free on-street parking in Derry city centre where you can park for up to one hour during business hours. This is patrolled regularly so don't risk a minimum £45 fine by staying longer!

Magazine Street is closed to non-permit holders during 11am-5pm daily but you can access it from bottom of Shipquay Street > Union Hall Place > Magazine Street for deliveries, drop-offs and collections.

If you need a space for longer than one hour please use one of the many city centre car parks. These include Victoria Market, William Street, Foyle Street, Foyleside, Bishop Street and Society Street car parks which are all within 5 minutes walk of Echo Echo in different directions.

Please Contact Us if you require any further information.

Public Transport

Bus
Foyle Street Buscentre is a 3-minute walk. From the Buscentre, continue towards Guildhall Square, through Magazine Gate, and onto the City Walls. Echo Echo is the only door on the west side of City Walls at Hangman's Bastion.

Train
Derry-Londonderry train station is located at Duke Street in the Waterside. You can walk from the train station over the Peace Bridge and into Guildhall Square in around 15 minutes.

Air
City of Derry Airport is a 15-minute journey by taxi. Belfast airports are further away at around 1.5 hours (International Airport / BFS) and 2 hours (George Best City Airport / BHD) by road. Belfast airports are serviced by regular *Airporter* connections. Dublin Airport is around 3 hours by direct coach transfer. See *Translink* for timetable and fare details.



LOTTERY FUNDED

Echo Echo Dance Theatre Company
City Walls, Magazine St. Derry
Tel: +44(0)28 71308883
www.echoechoadance.com
info@echoechoadance.com



HIRE US

Echo Echo Studios are generally available for hire for private use.

For public events, including performances and exhibitions, Echo Echo operates an artistic programming policy to ensure a high quality context for hirers in terms of artistic development, audience development, and practical support.

If you are interested in hiring Echo Echo Studios please contact us by phone or email.

Phone: +44 (0) 2871 308883

Email: barry@echoechodance.com



LOTTERY FUNDED

Echo Echo Dance Theatre Company

City Walls, Magazine St. Derry

Tel: +44(0)28 71308883

www.echoechodance.com

info@echoechodance.com

