

Echo Echo Dance Theatre Technical Specifications



Address: Waterloo House, Magazine Street, Derry-Londonderry, BT48 6HH

Website: www.echoecho.com

Contact: Barry Davis – Technical Manager – 07791 015889 – barry@echoecho.com

Ailbe Beirne – Company Manager – 028 71308883 – ailbe@echoecho.com

Steve Batts – Artistic Director – 07946 586941 – steve@echoecho.com

Studio 1 (Theatre) Specifications:

Dimensions and Flooring

Studio 1 has temporary tiered seating; therefore the studio layout can be customised according to use and required floor space/seating arrangement – please see the attached floor plans for different layouts. The entire floor area is covered with permanent Roscolem Classic Black vinyl flooring.

Overall studio dimensions: Depth – 11.10m, Width – 13.41m

Audience Layout 1: Depth – 7.50m, Width – 11.13m

Audience Layout 2: Depth – 8.87m, Width – 9.50m

Height to bottom of truss – 3.48m

Maximum clearance height (to bottom of strip lighting) – 3.30m

Lighting Control System

ETC Element 60 – 250 Channel Control Desk

19" TFT Monitor

Studio Lighting Equipment

12 x ETC Source Four Jr 25 -50 degree 575W

12 x Selecon Rama Fresnel 6" 1.2kW (including barn doors)

12 x Thomas Par 64 Euro Floorlite 1kW

18 x Chauvet COLORado 1 Tri Tour LED

10 x Halogen Floodlight 500W

12 x Doughty Tank Trap (fixed base)

(Gel holders are available for all lanterns)

Dimmers and Power

Three phase power supply

2 x Zero 88 Chilli Pro 24-10i Dimmer (total of 48 channels rated at 10 Amps per channel)

5 x 16A sockets

63A commando socket

Studio Sound Equipment

Yamaha MG 206C -20 Channel Mixer

6 x LD Systems Stinger 10 G2 Passive Full Range Speaker 250W

2 x LD Systems Stinger Sub 15A G2 Subwoofer 500W

2 x Crown XLS 1000 Digital Class D Amplifier

2 x DBX 231s Dual Channel 31-Band Equalizer

Lexicon MX200 Dual Reverb/Effects Processor

Numark MP 103 USB CD/MP3CD Playback Unit

2 x LD Systems WS 1000R2 Wireless Microphone System

Studio 2 (Rehearsal Space) Specifications:

Dimensions and Flooring

Studio 2 is a dance rehearsal studio on the ground floor of Echo Echo. The floor is covered with permanent Roscolem Adagio black vinyl flooring. Outdoor shoes are required to be taken off before entering Studio 2.

Overall studio dimensions: Depth – 7.66m, Width – 10.06m

Height to ceiling: 3.56m

(Please see attached floor plan for more details)

Echo Echo has full disabled access. It is also equipped with a reception area, green room/changing room (with accessible shower) and kitchen. If any of these or further facilities are required please contact us.

Additional Equipment (available on request)

ETC SmartFade 12 – 48 Channel Control Desk

Behringer XENYX 2222FX 22 Channel Mixer

Behringer XENYX 1002FX 10 Channel Mixer

2 x Mackie SRM350 2-Way 10" Active Speakers 350W

1 x Mipro MA708 Portable Wireless Amplifier 120W

5 x Roland CM 30 Cube Amplifier 30W

Zoom H4n Stereo Audio Recorder

Nikon D5000 Digital SLR Camera

Panasonic HX-WA10 Full HD 1920x1080 Camcorder

Canon XM2 3CD Camcorder

Canon MV730i Digital Video Camcorder

Epson EB-W22 LCD Projector 3000 lumens

100" Portable Tripod Projection Screen

Microphones and Accessories

4 x Shure SM58

3 x Shure SM57

1 x Shure Beta 52A

3 x Sennheiser E604

2 x LD Systems WS1000 MD Wireless Mic

2 x LD Systems WS1000 BPH Wireless Headset Mic

2 x Behringer DI100 Ultra-DI

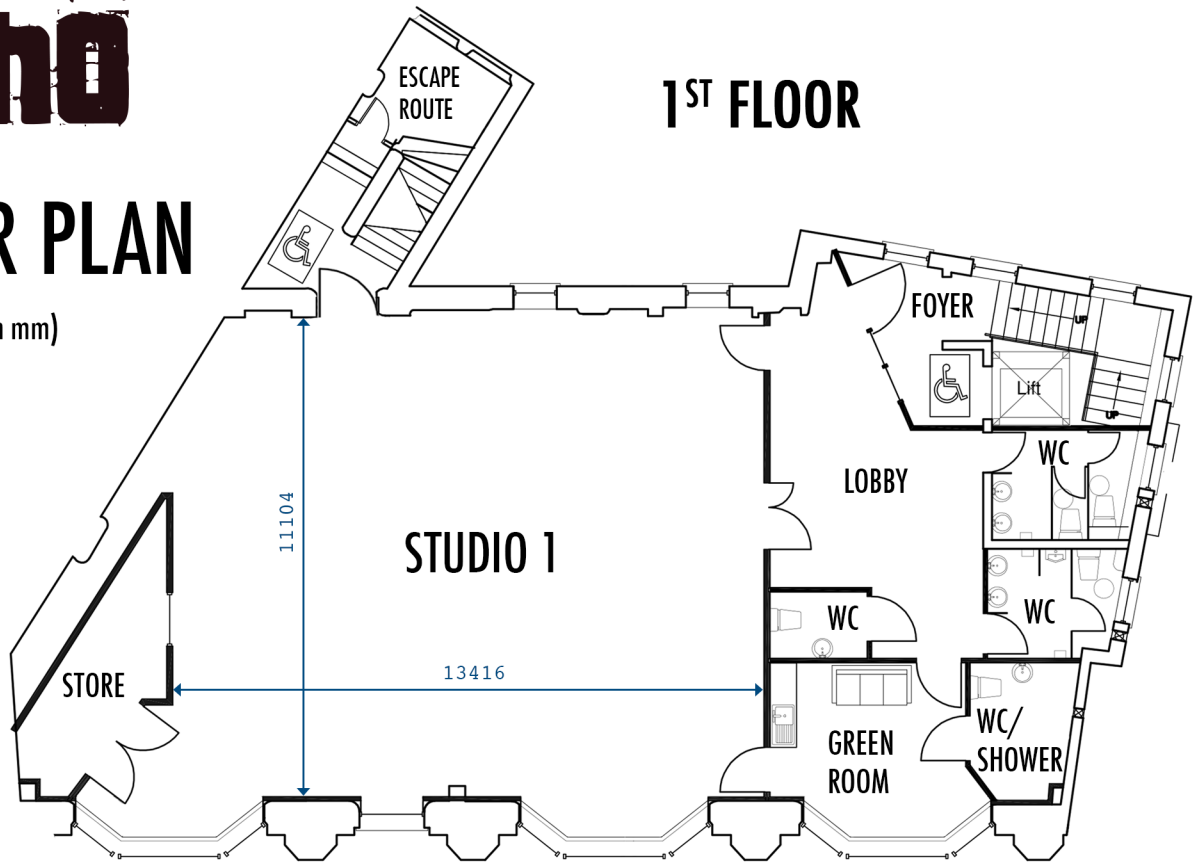
1 x Behringer DI20 Ultra-DI

8 x Microphone Stands

6 x Speaker Stands

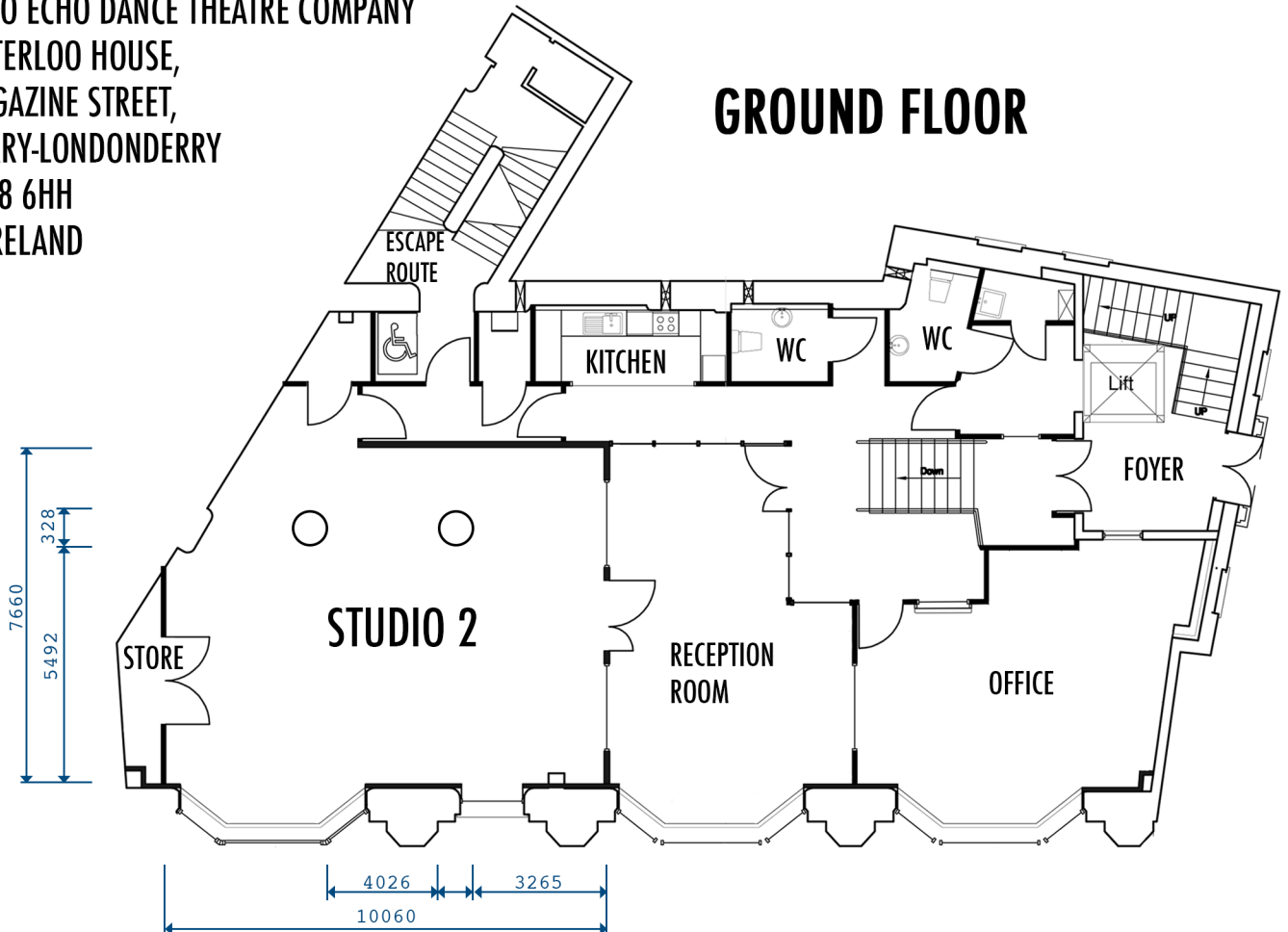
FLOOR PLAN

(Measurements in mm)



ECHO ECHO DANCE THEATRE COMPANY
WATERLOO HOUSE,
MAGAZINE STREET,
DERRY-LONDONDERRY
BT48 6HH
N.IRELAND

GROUND FLOOR

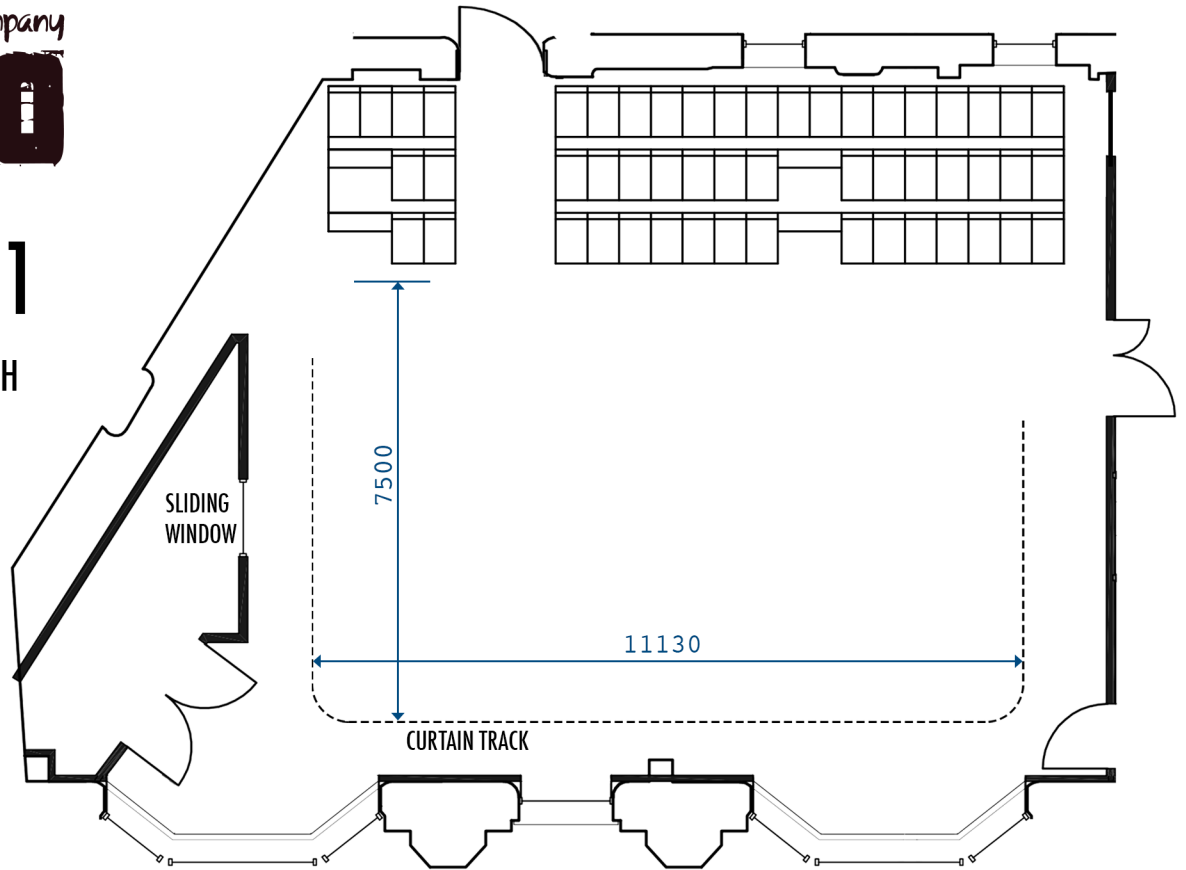


AUDIENCE LAYOUT 1 (SEATING - 52)

STUDIO 1

THEATRE SPACE WITH
AUDIENCE SEATING
LAYOUTS

(Measurements in mm)



TIERED SEATING HEIGHTS:

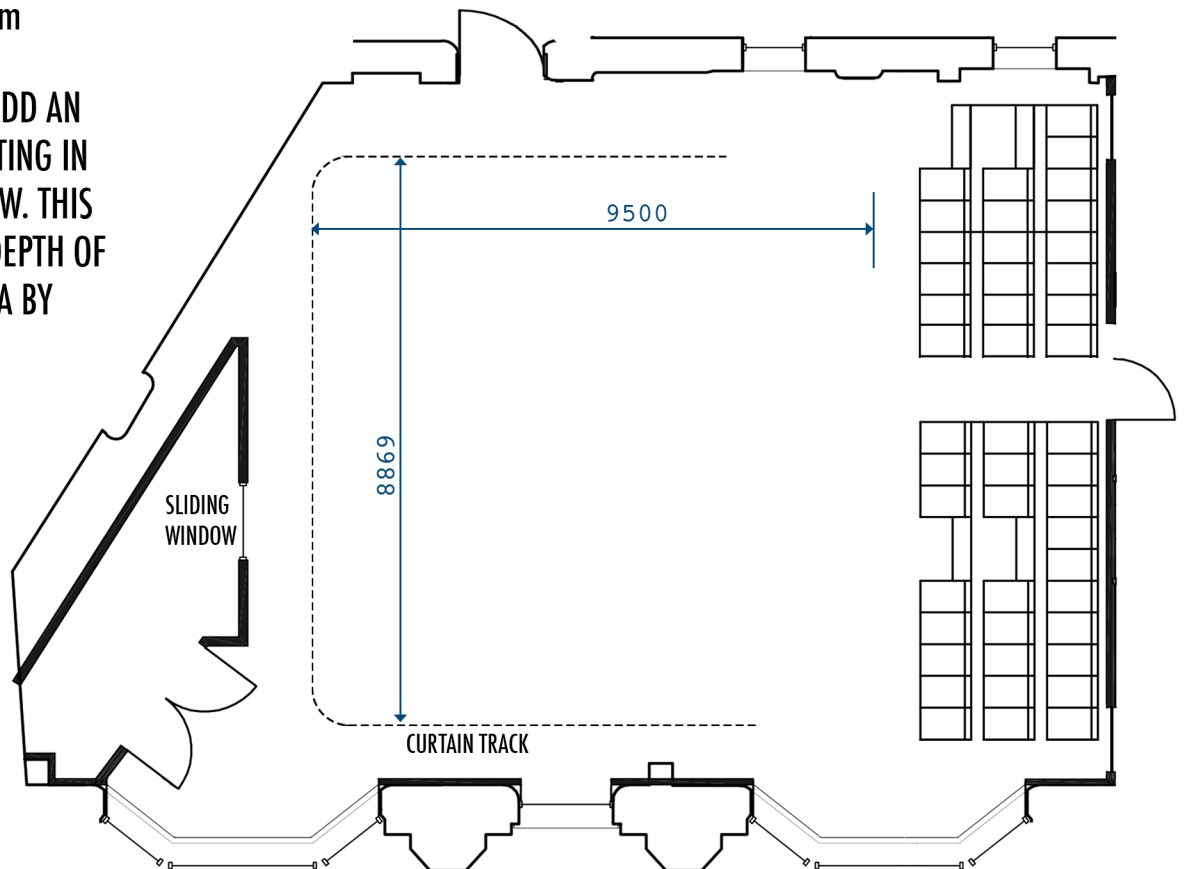
FIRST ROW - GROUND

SECOND ROW - 400mm

THIRD ROW - 800mm

AUDIENCE LAYOUT 2 (SEATING - 46)

IT IS POSSIBLE TO ADD AN
EXTRA ROW OF SEATING IN
FRONT OF FIRST ROW. THIS
WILL REDUCE THE DEPTH OF
PERFORMANCE AREA BY
APPROX 800mm

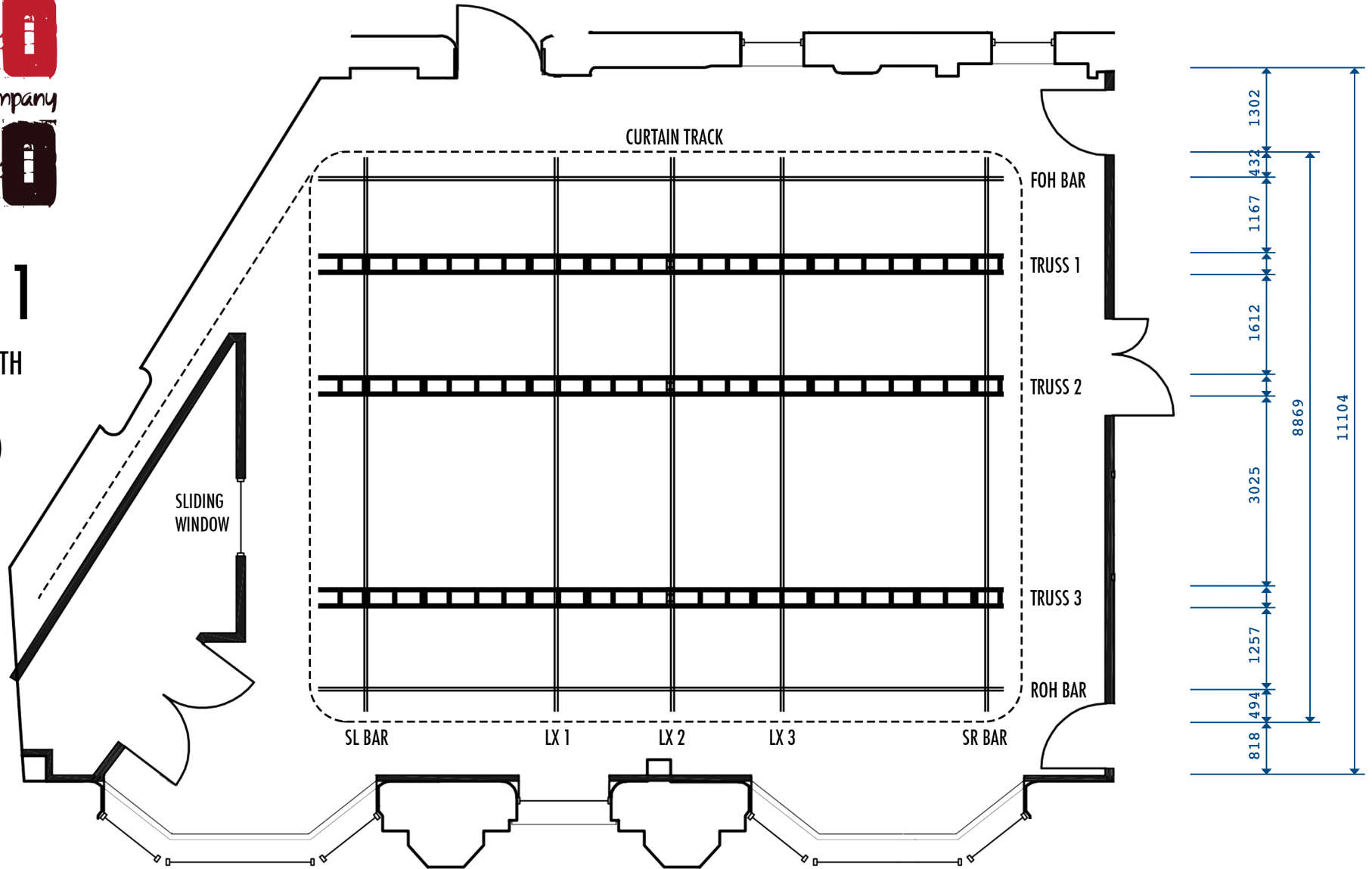




STUDIO 1

THEATRE SPACE WITH
LIGHTING RIG

(Measurements in mm)



MAXIMUM CAPACITY: 110

MAXIMUM SEATING CAPACITY: 72

FLOOR TO BOTTOM OF TRUSS: 3480mm

MAXIMUM CLEARANCE (FLOOR TO
BOTTOM OF STRIP LIGHTING): 3307mm

